

Hydraulic Clamp Nut

Piston system

NORIS

Series N11.02

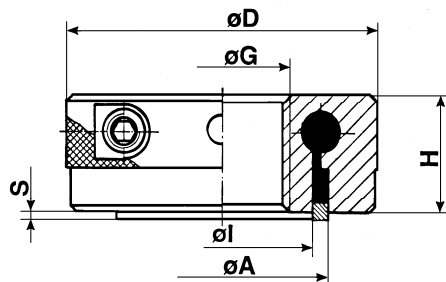
Features of series

**Tangential operating
with Allen key**

Medium remains into the system



The actuator screws has to be turned into the body by using the enclosed Allen key.
The internal medium will flow into the circular groove and raise the ring piston.
With less manual force you create a big hydraulic clamping force.
For to relieve the clamp nut put the actuator screws to the start position
and move the nut to the opposite direction.
The medium remains into the system.



Clamping range 2 mm

Thread $\varnothing G_{max.}$	Ring piston		Outer Diameter $\varnothing D$	Height H	Clamping force (achieved by hand) in kN	Part No Clamping range S 2 mm
	$\varnothing A$	$\varnothing I$				
42	65	55	92	35	80	111.02.042
52	84	72	108	35	130	111.02.052
68	92	82	118	35	120	111.02.068
80	110	100	132	40	150	111.02.080
100	125	110	160	40	190	111.02.100
120	150	135	195	50	140	111.02.120
140	175	155	210	55	220	111.02.140
160	200	180	240	55	210	111.02.160
180	222	202	255	55	230	111.02.180

Against corrosion our hydraulic clamp nuts are protected with a brown finish.
The standard sealing systems are suitable for temperatures up to 80°.
The ring piston is locked against drop out.

Special design of hydraulic clamp nuts on request

NORIS

ARMATUREN BURKENSTEIN GMBH & CO. KG

– ABTEILUNG SPANNELEMENTE –

D-90411 Nürnberg
Puscherstraße 3

Telefon: + 49 (0) 911/ 52 15 06 3
Telefax: + 49 (0) 911/ 52 24 40

E-Mail: noris@noris-armaturen.de
Internet: www.noris-armaturen.de